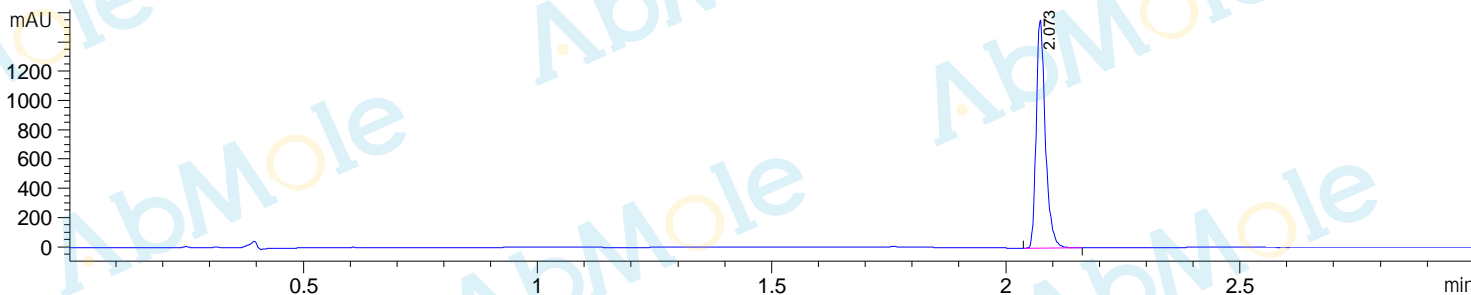
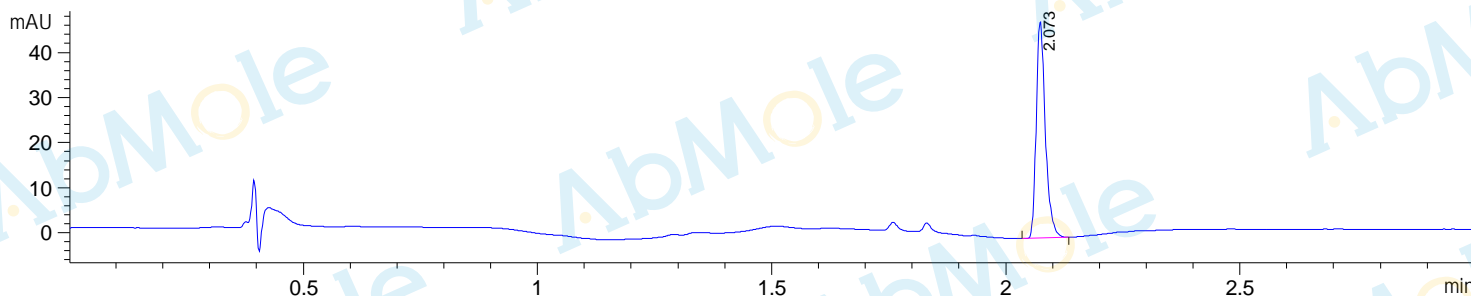


Sample Name : M6394-AC 45594-01-LCMS
Acq. Operator : C22
Spec. Reported : MS Integration
Acq. Method : D:\METHODS\1-POS-3MIN.M
Analysis Method : D:\METHODS\1-POS-3MIN.M
Sample Info : Easy-Access Method: '1-POS-3MIN'
Method Info : Mobile Phase: A: water(0.01%TFA) B: ACN(0.01%TFA)
 Gradient: 5% increase to 95%B within 1.3 min, 95%B for 1.7 min.
 Flow Rate: 2.0ml/min
 Column: Sunfire C18, 4.6*50mm, 3.5um
 Column Temperature: 50 C
 Detection: UV(214,4nm) and MS(ESI, Pos mode, 50 to 700 amu)

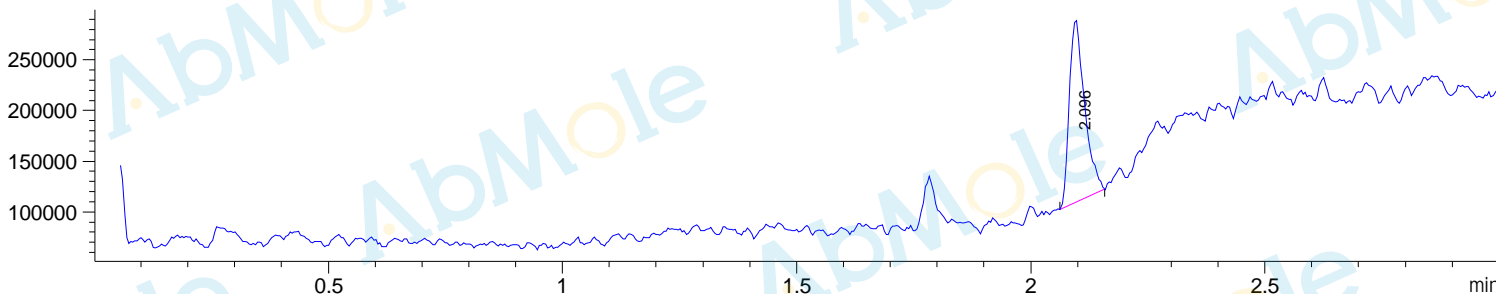
DAD1 A, Sig=214,4 Ref=off



DAD1 B, Sig=254,4 Ref=off



MSD1 TIC, MS File ES-API, Pos, Scan, Frag: 70



Integration Results for DAD1 A, Sig=214,4 Ref=off

RetTim	Width	Area	Height	Area%
2.07	0.02	2113.49	1560.51	100.00

Integration Results for DAD1 B, Sig=254,4 Ref=off

RetTim	Width	Area	Height	Area%
2.07	0.02	65.13	48.08	100.00

Ret. Time: 2.10

